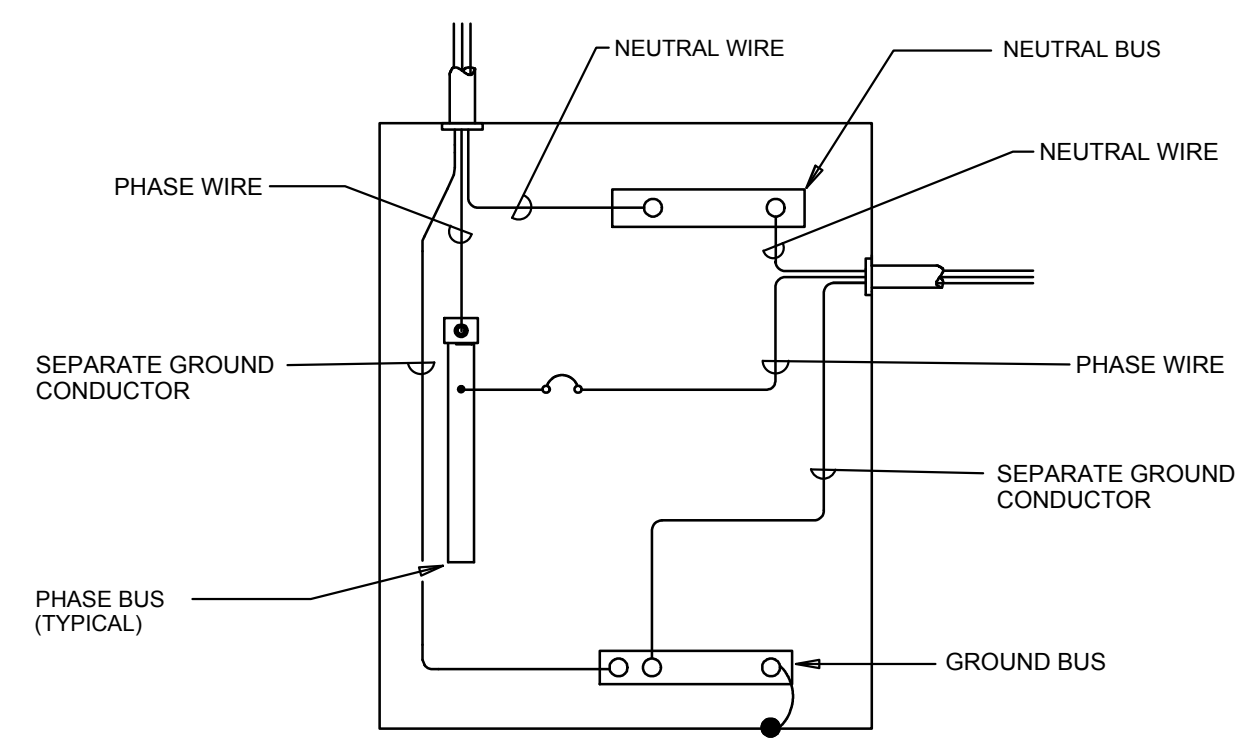
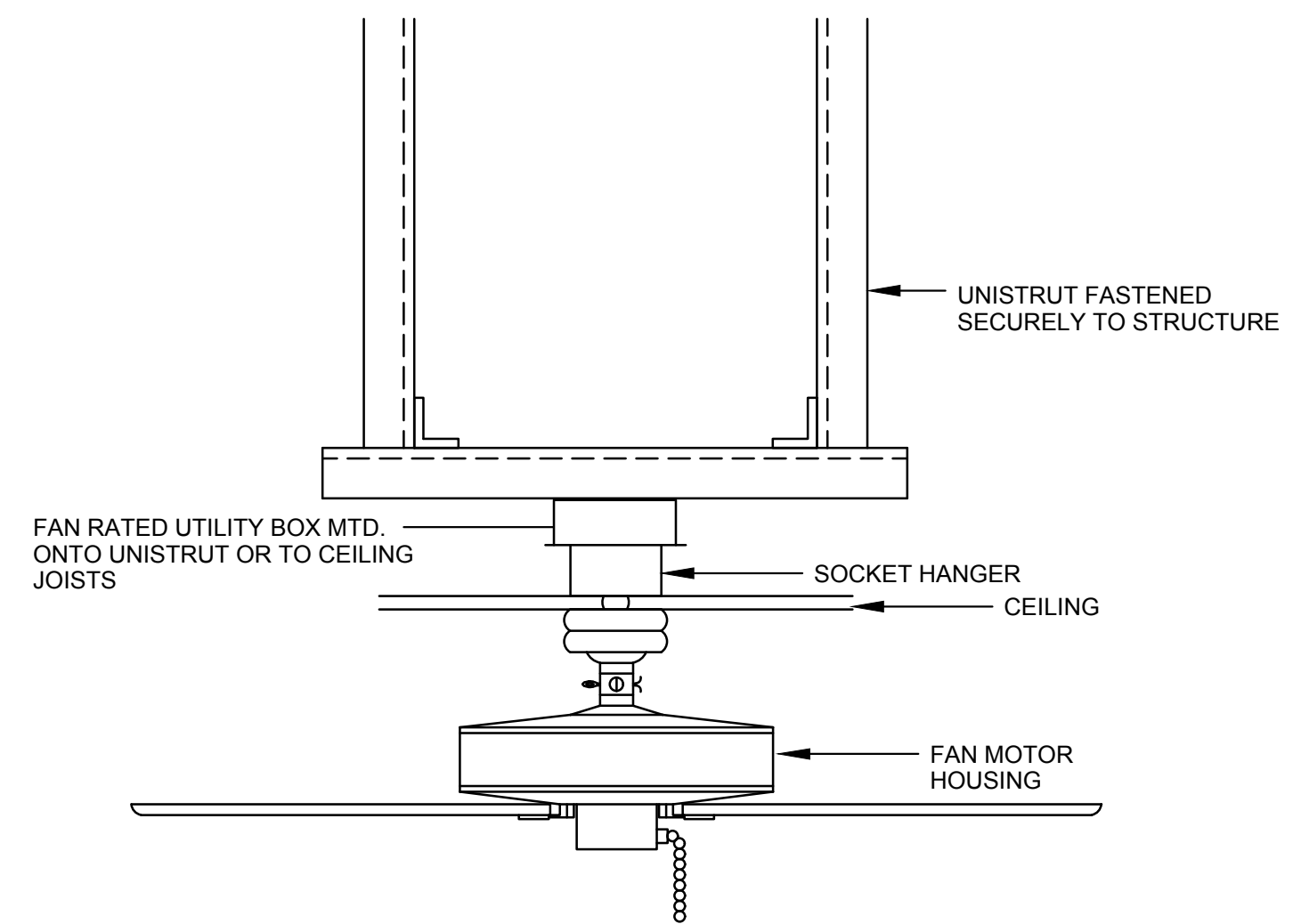


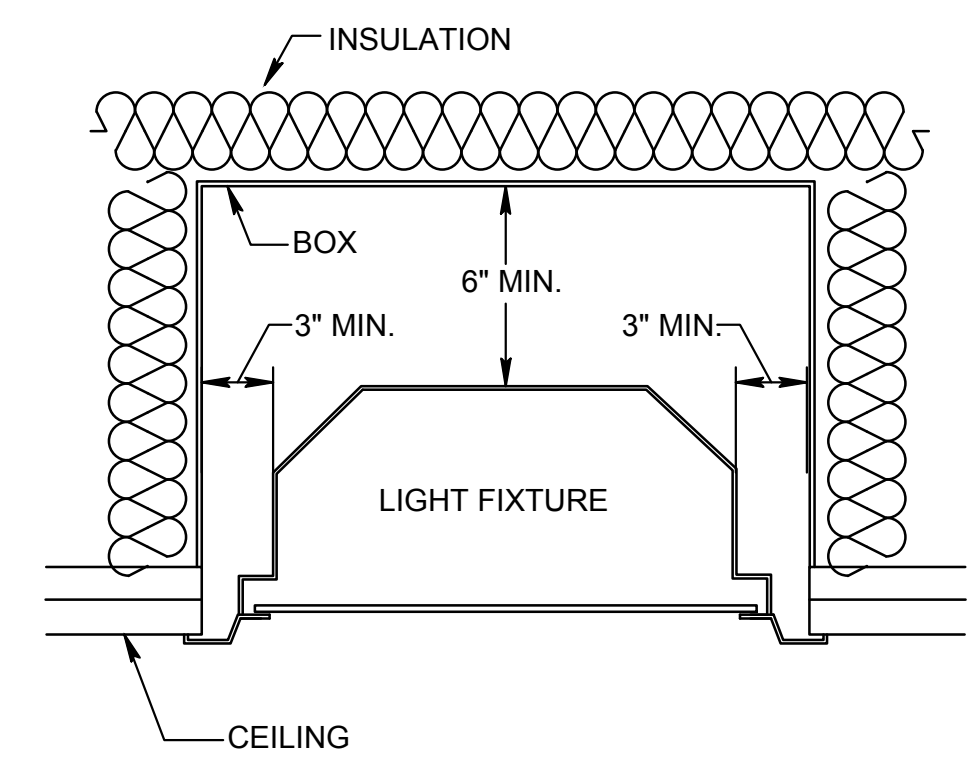
ONE-LINE DIAGRAM



TYPICAL ELECTRICAL PANEL DETAIL



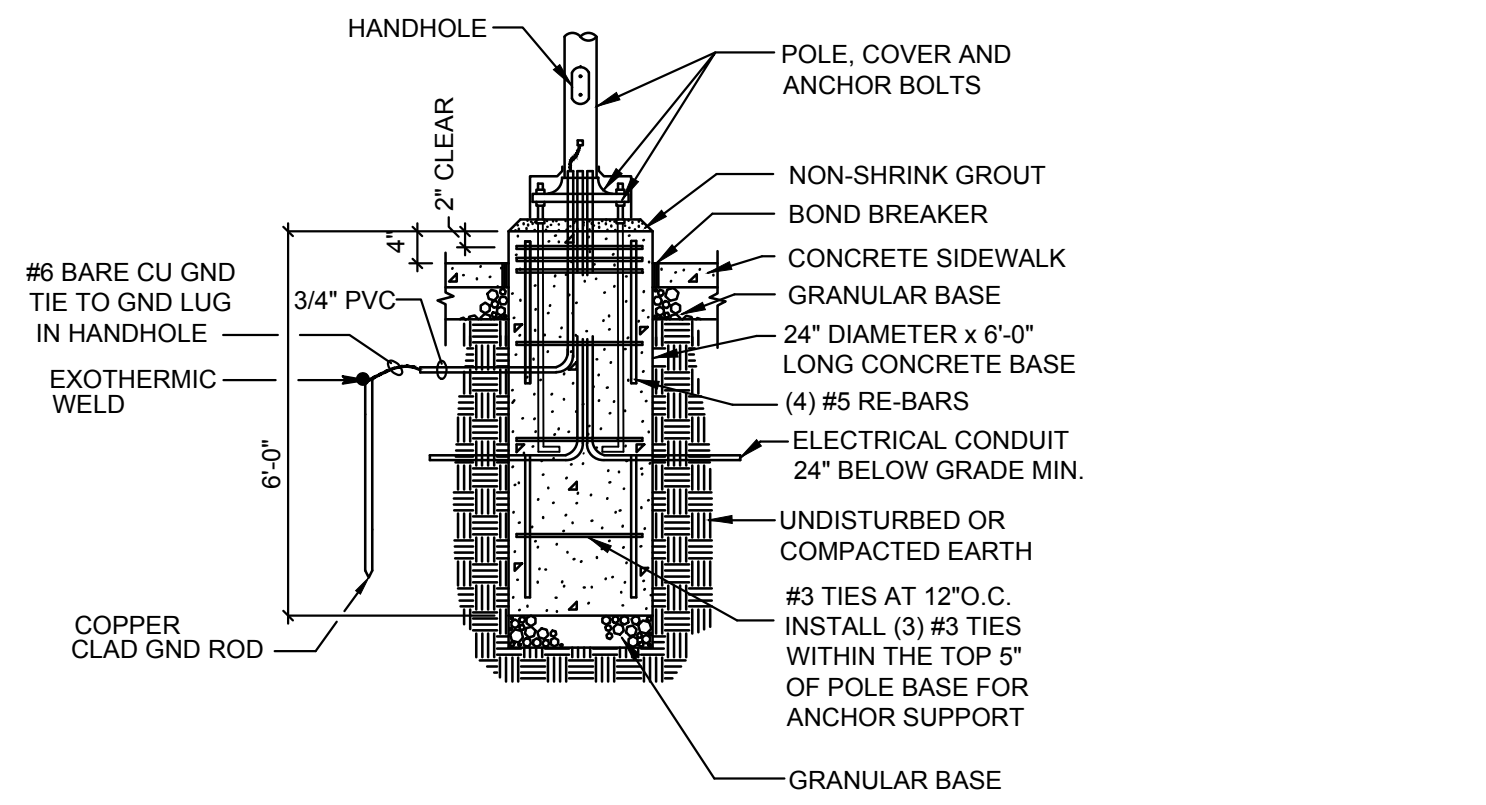
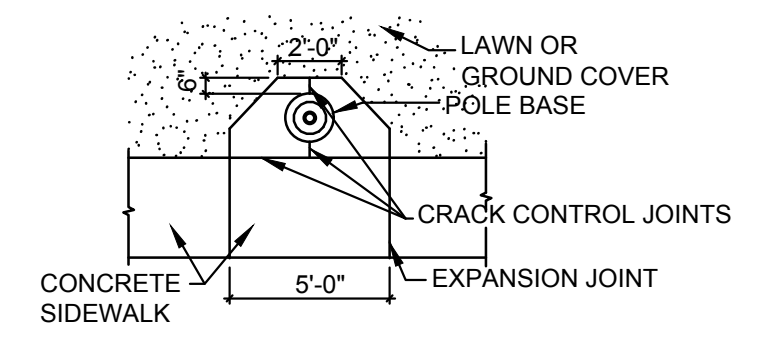
CEILING PADDLE FAN MOUNTING DETAIL



NON-IC FIXTURE INSTALLATION  
DIVISION 16 TO FURNISH AND INSTALL A BOX AROUND RECESSED LIGHT FIXTURES INSTALLED IN INSULATED CEILING. THE BOX IS TO BE MADE OF DRYWALL OR DUCT BOARD AND IS TO BE CONSTRUCTED TO ENSURE THAT INSULATION IS HELD AWAY FROM THE HOUSING AT A MINIMUM OF 6" TO ENSURE PROPER OPERATION OF THE NON IC RATED LIGHT FIXTURE IN THE INSULATED CEILING.

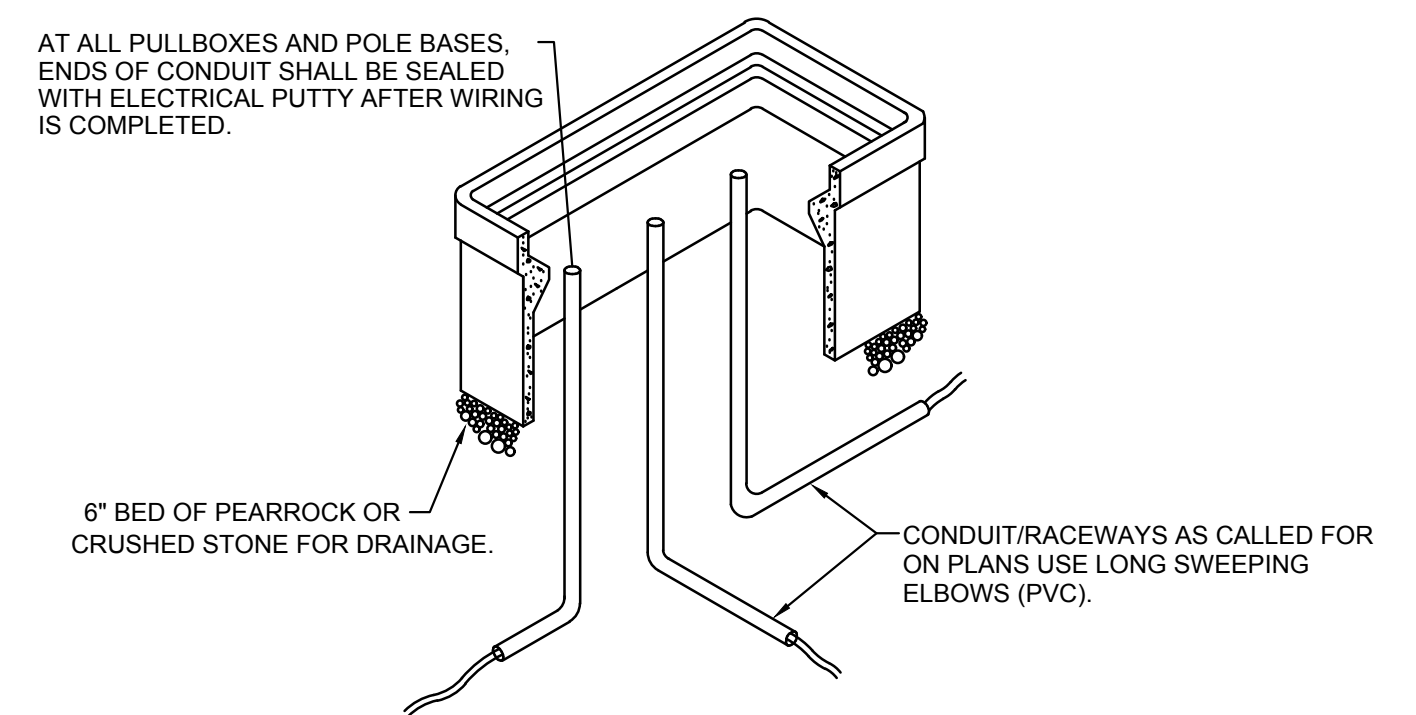
NON-IC RATED FIXTURE MOUNTING DETAIL

POLE BASE DETAIL - PLAN VIEW

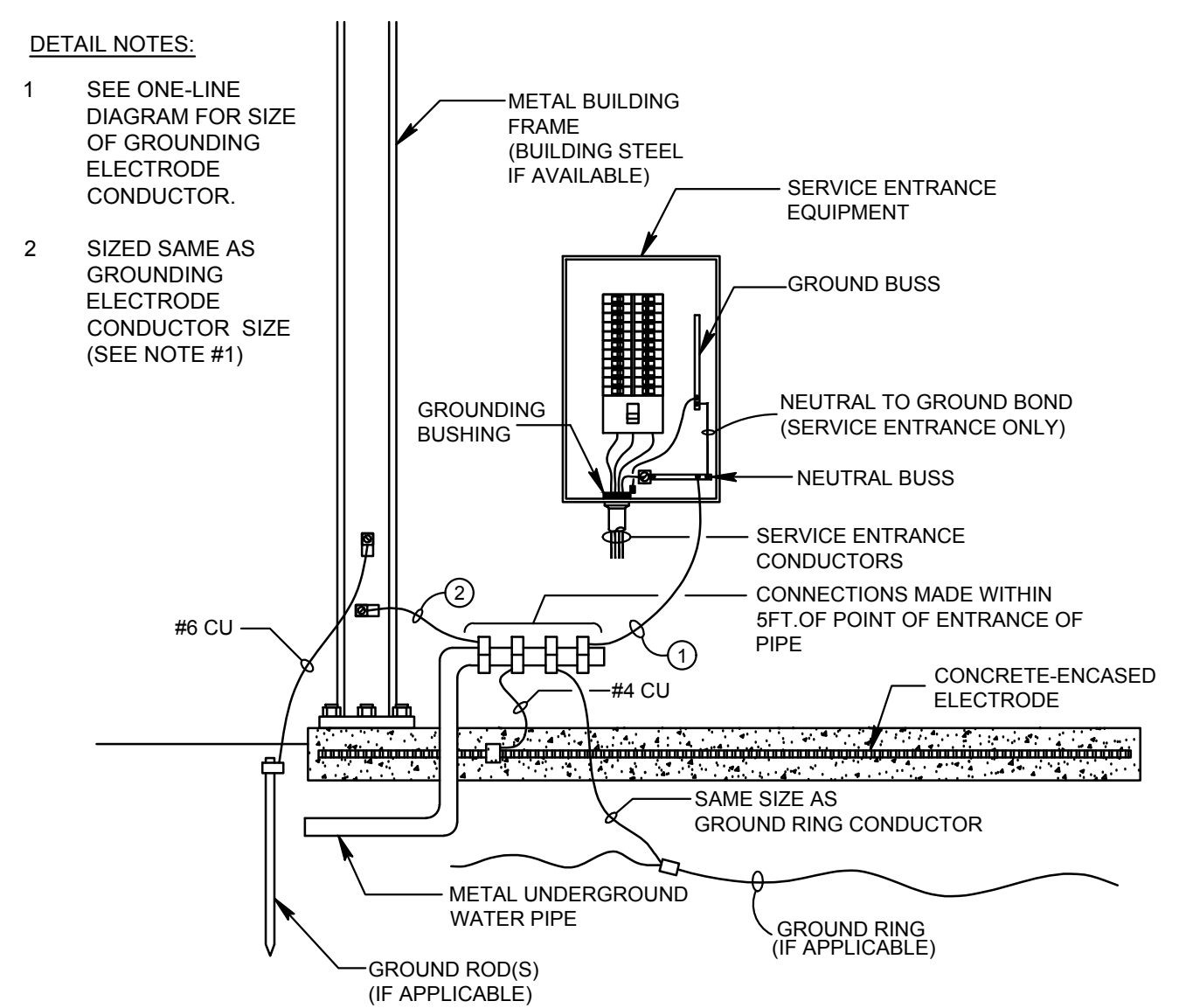


POLE BASE DETAIL - SIDEWALK/LANDSCAPE

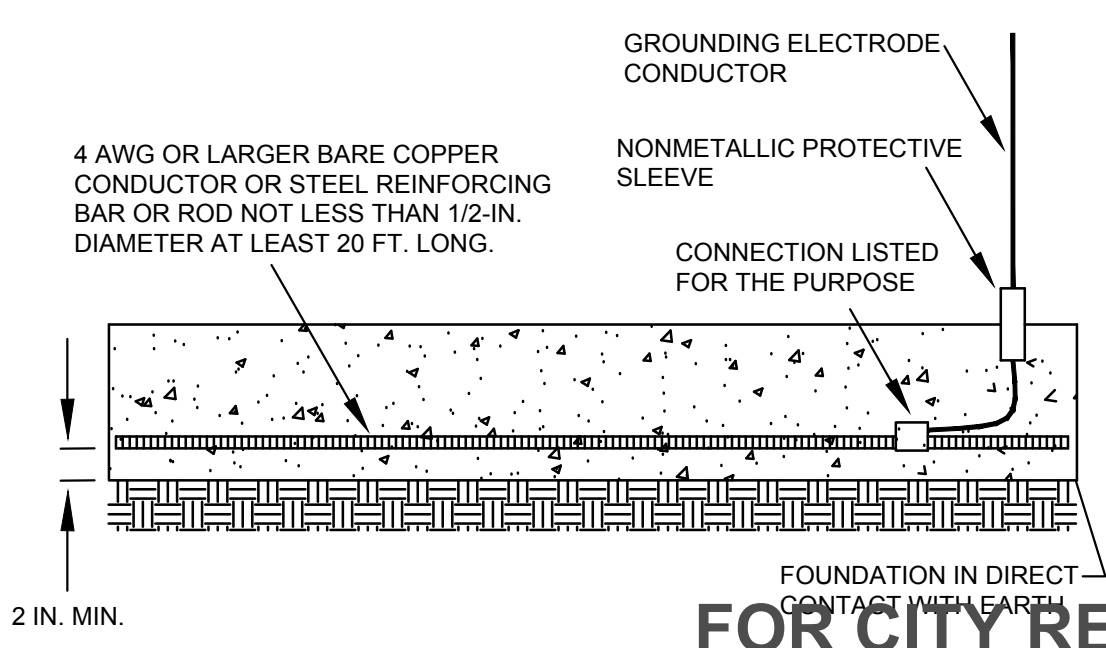
- NOTES:
- 1) CONDUITS NOT TERMINATING IN OR AT PULLBOXES NEED NOT RUN THROUGH PULLBOXES UNLESS REQUIRED FOR PULLING NEC.
  - 2) DIMENSIONS AS INDICATED ON DRAWINGS
  - 3) COVER TO BE PROVIDED (LABEL ELECTRICAL); TRAFFIC AREA: TRAFFIC RATED LANDSCAPE AREA: FIBERGLASS
  - 4) PROVIDE EXTENSIONS AS REQUIRED.
  - 5) PULLBOX TO BE: TRAFFIC AREAS: PRECAST, AMCOR OR EQUAL LANDSCAPE AREAS: FIBERGLASS



ELECTRICAL PULLBOX DETAIL



GROUNDING ELECTRODE SYSTEM DETAIL



FOR CITY REVIEW  
NOT FOR CONSTRUCTION  
**eco**  
electricalengineeringcompany  
world wide web: e3co.com  
800 s. industry way, suite 350  
meridian, idaho 83642  
phone: 208.378.4450  
fax: 208.378.4451  
e3co project #: 16154